



High performance  
windows & doors



COMMERCIAL APPLICATIONS  
Student accomodation



**deceuninck**





Deceuninck is a 79 year old global PVC group with large scale operations in Western Europe, Central & Eastern Europe, Turkey and North America. We are one of the Top 3 players in Europe, with a leading presence in the UK. Our extensive range of innovative high performance PVC-U windows and doors ensures our products are the preferred choice for your commercial projects.



# Why Deceuninck?

## 10 Production sites worldwide

Deceuninck is a leading global PVC-U window and door extrusion company established in 1937. Our UK operations in Calne, Wiltshire were set up in 1983, over 30 years ago.

We have 10 production sites worldwide, manufacturing over 200,000 tonnes of compound. That's around 1,000,000 windows a year, sold in over 75 countries.

## Passion for Excellence

We understand the important role of windows and doors in the building envelope. Natural light, ventilation, ease of operation and energy efficiency are all key criteria when choosing the right products for your project. Architects and specifiers look for quality, versatility and consistency as well as great looking windows.

Our passion for innovative design, high performance and continuous improvement means our PVC-U windows and doors are technologically advanced, giving you the best in durability, reliability, thermal insulation, design and colour. Our products stand out and stay beautiful for longer, with very little maintenance.

We produce our own tooling to ensure full control over the quality of our products. This allows us to constantly monitor and maintain existing tools, and guarantees consistently high-quality manufacturing.

## Deceuninck's production sites

- |             |               |                |
|-------------|---------------|----------------|
| • Bogen, DE | • Izmir, TR   | • Pozan, PL    |
| • Calne, UK | • Kocaeli, TR | • Protvino, RU |
| • Gits, BE  | • Monroe, US  | • Roye, FR     |



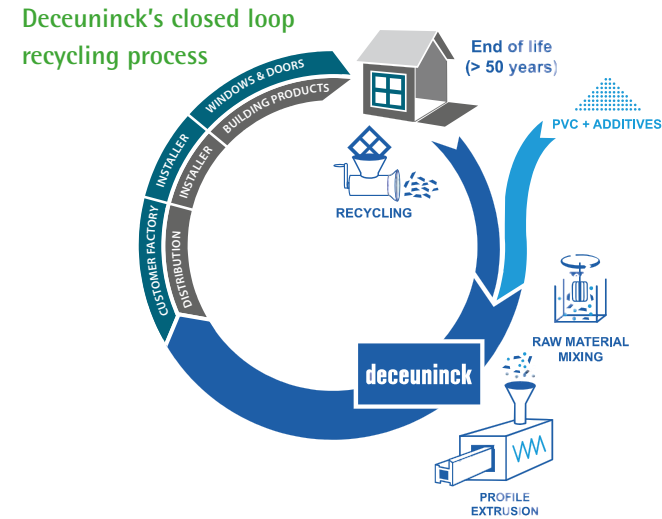


# No.1 PVC-U Recycling Plant

All Deceuninck products are 100% recyclable at the end of their lives – in fact a key benefit of PVC is that it can be recycled up to 10 times without a problem.

We have been recycling our own production waste for 50 years. Our recycling plant in Belgium is the **No.1 plant in the Benelux**. It has a 20,000 tonne capacity and is the largest of its kind in Europe for rigid PVC recycling. Our closed loop approach means we collect, transport, sort and recycle end-of-life PVC-U windows to produce material for new window frames.

As members of the British Plastics Federation (BPF), Deceuninck supports VinylPlus, which is part of the RecoVinyl Scheme, a Europe wide initiative to ensure end-of-life post-consumer PVC waste is collected and recycled.



The VinylPlus commitment includes an ambitious set of sustainable development targets centered on five commitments:

1. Controlled Loop Management and the development of innovative recycling technologies;
2. Addressing concerns about organochlorine emissions;
3. Ensuring the sustainable use of additives;
4. Enhancing energy efficiency and the use of renewable energy and raw materials in PVC production;
5. Promoting sustainability throughout the whole PVC value chain.

For more information, visit [www.bpf.co.uk](http://www.bpf.co.uk)

# PVC-U: The material of choice

## Durable, sustainable and low maintenance

PVC-U window and door installations account for 80% of the total market, making it the material of choice for most commercial projects. The reasons are clear. PVC-U is:

- Highly energy efficient
- Recyclable
- Sustainable
- Lightweight
- Low maintenance
- Durable & long lasting
- Does not corrode, rot, warp, peel or chip

Compared to other materials, PVC-U windows and doors have an average life of 35-50 years in normal urban environments, and in reality last a lot longer. The material does not require repainting and is easy to keep clean.

For more information, visit [www.bpf.co.uk](http://www.bpf.co.uk)





# Deceuninck Windows & Doors

## The preferred choice for student accomodation

When it comes to selecting the right windows and doors for your school and educational projects, you'll want to strike the optimum balance between energy efficiency, security, weather performance, durability, low maintenance, colour and great looks.

Reliability is also important. Time is of the essence when it comes to managing large projects, with tight schedules at each stage. On time, in full deliveries and efficient installation are key criteria.

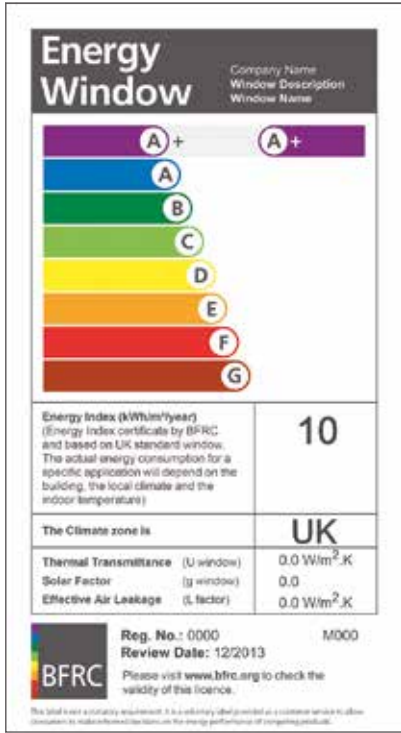
Deceuninck has been manufacturing window and door profile for the domestic, public and commercial sectors for many years. Our strong and knowledgeable network of fabricators and installers provide the best in quality, on time delivery and installation.





# Energy Efficient

## High performance double & triple glazing



Specifying windows and doors with the highest thermal performance is vital at a time of soaring energy costs and Government's drive to improve the energy efficiency of buildings.

Energy rated windows stop heat escaping and capture warmth from natural sunlight, helping save money on fuel bills.

Deceuninck's high performance double glazed windows achieve A+ energy rating, or a U-value as low as 1.2 W/m<sup>2</sup>K, providing superb thermal insulation.

Our triple glazed windows achieve A++ energy rating, or a U-value as low as **0.9 W/m<sup>2</sup>K** for the best in energy efficiency.

### Thermal Chamber Insulator (TCI)

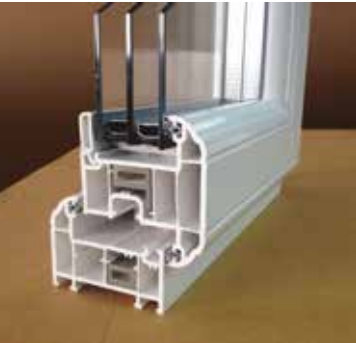
Deceuninck's TCI is a PVC thermal insert placed inside the window profile, replacing steel reinforcement. Based on theoretical thermal modelling tests, we found that by using PVC Thermal Chamber Inserts instead of steel, window energy ratings and U-values are significantly improved. PVC thermal inserts also weigh less than steel, and are 100% recyclable.

Deceuninck's TCI product meets the following British Standards:

- BS 7412 – Specification for PVC-U Windows & Doorsets
- PAS 24 – Enhanced Security for Windows & Doorsets



Deceuninck's triple glazed windows achieve a U-value as low as 0.9 W/m<sup>2</sup>K for the best in energy efficiency



Improved U-values with Deceuninck's thermal inserts



Unique glass fibre technology improves thermal efficiency by 30%



# Built-in Security

## Enhanced high security performance windows & doors

Installing safe and secure windows and doors is essential for schools and educational buildings. Our wide range of hardware is strong and secure, without compromising on look and style.

Deceuninck's range of modern, contemporary and period style windows incorporate the latest built-in safety features, including internal glazing and a locking system for ultimate protection.

All our windows and doors are fitted with hinge protectors at the back of the sash to provide enhanced resistance to forced entry.

We've also taken the latest anti-bump, anti-snap cylinder technology and built it straight into our doors as standard.

Our suite of windows and doors has been tested to and achieves the following security certification:

- Secured by Design – windows and doors
- PAS 24 – windows and doors



KM 25857  
BS EN 12608



KM 33904  
PAS 24 - Windows



KM 57124  
PAS 24 - Doors



ISO 9001 + ISO 14001



001



# Outstanding Weather Performance

It's almost impossible to prevent some wind-driven water getting into windows. Good window design provides an efficient way to drain it quickly back out. Efficient drainage protects hardware and glazed units against degradation and maintains high-exposure performance throughout the long life of a PVC-U window.

Deceuninck's windows include a multi-functional weatherseal, manufactured from high performance thermoplastic elastomers. The unique design ensures unrivalled weather performance. The weatherseal is welded at the corners, providing an all-round seal against wind and rain, as well as improved insulation.

Our windows are tested to the latest British and European standards for water ingress, air permeability and wind resistance.

- EN 1026: Air Permeability
- EN 1027: Water Tightness
- EN 12211: Wind Resistance







# No.1 in Colour

We understand each project is different so it's important that architects and specifiers have a choice in colour and innovative design.

Colour is in huge demand and growing. In some part of the UK, colour represents up to 40% of window installations. As a result, colour options for PVC-U windows have grown significantly in recent years.

Deceuninck leads in colour. We sell 50% more coloured profile than the industry average with our extensive range of foils, painted profile and contemporary colours to suit a variety of project styles.

Our colour choices include:

- Colours by Deceuninck
- Decoroc: contemporary colours with a matt satin finish

**COLOURS**  
by deceuninck

**DECOROC**  
by deceuninck

# COLOURS

by deceuninck

An extensive choice of woodgrain finishes, each with matching ancillaries, trims and accessories. Choose any combination, or combine two complementary foils.

We have a wide range of subtle and standout colours to use singly or in creative colour way combinations to suit different project designs.

All our foils are extremely durable and come with a 10 year manufacturer's guarantee.



White Grain	Heritage White	Ice Cream	Classic Cream	Agate Grey
Slate Grey	Grey	Soft Cherry	Quartz Grey	Chartwell Green
Steel Blue	Dark Red	Moss Green	Vin Rouge	Smooth Anthracite
Black Ash	Fir Green	Rustic Cherry	English Oak	Anthracite Grey
Golden Oak	Antique Oak	Grey Cedar	Irish Oak	Rosewood
Nut Tree	Silver Bullet*	Bronze Metallic*	Pyrite Metallic*	<p>We have produced the colour swatches as accurately as printing will allow. Please ask to see our swatch book for precise reference.</p> <p><b>*Only available in Traditional 2500</b></p>



Decoroc is the preferred choice to Aluminium. It represents an extensive range of contemporary colours with a matt satin finish, perfect for your commercial projects.

Our Decoroc coating system applies a unique, tough and textured oven-cured coating which is incredibly durable, scratch resistant and cost effective - during the Decoroc coating process, each profile is inspected to check the visual appearance, scratch resistance, hardness and adhesion.

It is easy to clean and maintain. Graffiti, cement and other marks can be easily removed without affecting the finish of the profile.

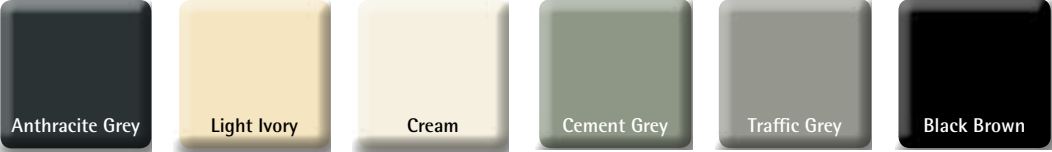
Decoroc's colour options can be mixed and matched with one colour on the outside and another on the inside. Most RAL colours are available on minimum order quantities.

Decoroc comes with a 10 year guarantee.



Most RAL colours available

Colours available on a short lead time



Additional colours





# Innovative Design

We take our inspiration from the buildings and environment around us. So our designs and innovations are flexible, versatile and created to suit a wide range of commercial projects, contemporary or traditional.

Deceuninck's wide and innovative range of PVC-U windows and doors represents the kind of intelligent design and thinking that makes its products market leaders.

The range includes...

**Traditional 2500 Casement Window** Years of research and development has resulted in a technically advanced system ideal for commercial projects. It offers the best in weather-proofing, energy efficiency, security and contemporary design. A chamfered system with equal sightlines to give a cleaner view inside and out for style and elegance.

**Heritage 2800 Casement Window** This decorative system offers the elegance of traditional timber with all the benefits of PVC-U. Its sculptured shape and symmetrical design plus an unbeatable choice of colour from stock means this system will give your project the perfect balance in design and look. It is PAS24 accredited and achieves U-values as low as 0.9W/m²K. The unique design of this system also ensures unrivalled wind resistance, water tightness and air permeability.

**Contemporary 5000 Casement Window** This unique window and door suite embraces high performance in a contemporary design. It is modern and sleek with a unique 'pencil round' feature.

**NEW Fully Reversible Window** Ideal for medium to high-rise developments, Deceuninck's new Fully Reversible Window (FRW) is best-in-class for weather and thermal performance. It achieves PAS24 for security and top weather performance with Class A4, 600Pa Air Permeability; Class 9A, E1050Pa Water Tightness; and Class A5, AE2400Pa Wind Loading. It also achieves 1.3 U-value double glazed, and an outstanding 1.0 U-value triple glazed using Deceuninck's fully reinforced patented BlueForce steel-wire foam technology.

With up to 1.4m x 1.4m maximum size and an 80kg weight limit, it is perfect for use in modern buildings with large window apertures. It's built for the real world. Moving the fitting position away from the gearing means the fixing doesn't interrupt the rotation of the window. The extra screw fixing and lug fixing options make it quicker and easier to install. No more drilling through reinforcement! The high weight and size limits and top technical performance mean specifiers know they can get a product which covers all their project's criteria.

PLUS...

**UNIQUE Glass Fibre Technology** Deceuninck's patented ground-breaking Linktrusion® technology is the first to remove the need for traditional steel reinforcement. Linktrusion® is the combination of glass fibre reinforced PVC profiles and an extruded reinforcement profile with embedded steel wires in a low density insulating foam core. Windows with Linktrusion are as strong as steel reinforced windows, but 30% more thermally efficient, with up to 40% saving on materials and weight. The windows are 100% recyclable.







## Case Study – Victory Pier

Situated on the waterfront, Victory Pier is a spectacular new landmark development that draws upon the rich maritime heritage of the River Medway. With over £6 billion being invested into Medway, Victory Pier represents the first step in a wider regeneration project that will transform the whole area into a dynamic new Riverside City.

Deceuninck is proud to be a part of this ambitious multi-billion pound investment plan.





# Case Study – Goodman Fields

Goodman Fields is a high profile development in the heart of the City ideally located for Canary Wharf, Docklands and South Bank. Great emphasis was placed on the sustainability of the building, so the energy efficiency of the windows was of key importance. Tilt-only windows in Anthracite Grey were specified, using the Traditional 2500 system.

The Goodman Fields student accommodation opened in the summer of 2013 and the £80 million scheme represents the sector's largest transaction for several years. It's a flagship scheme offering premium accommodation for London's students.







## Case Study – Southampton City Gateway

Southampton City Gateway is a mixed use development comprising a 15 storey student accommodation block occupying 12,456 square metres. It includes 364 student rooms with medical centre, pharmacy and retail units at ground floor level.

Prior to this development, several mixed use schemes had been planned for the site, but had all failed due to viability issues. Bouygues Development redesigned the scheme, changing the focus from residential to student accommodation and led the project to success.

The original specification called for aluminium windows but when this was found to be out of the budget, Deceuninck's Decoroc Anthracite Grey was chosen for its close match to the original aluminium specification.





# Technical Support

Our Technical Team are at hand to help you specify the correct product for your project. They will guide you at each stage on the use of products, samples, drawings and specifications.

**Our technical and design service includes:**

**NBS Plus**

Our technical product information is included in this dedicated library of manufacturers' product information, contained within the UK's industry leading specification products NBS Create and NBS Building. Products listed in NBS Plus are directly linked to specific clauses and can be imported instantaneously into a specification. NBS Plus contains over 20,000 product specifications and is updated regularly, so designers can be confident that they are always referencing the very latest product information.



**RIBA Product Selector**

Find our product catalogues, technical documents and design files within the industry-leading and definitive online index of manufacturers' product information. RIBA Product Selector is a free resource for construction professionals to research and select construction product and service information for all types of building design projects, and can be browsed by CI/SfB classification to assist with product selection.



**NBS National BIM Library**

Our products are available as BIM objects within the UK's fastest growing BIM Library where they are placed directly in front of specifiers working on Level 2 BIM projects. The NBS National BIM Library is free to use and is the only BIM object library which links directly to NBS specification software and to the NBS BIM Toolkit – an essential requirement for Level 2 BIM. All our objects are authored to meet the requirements of the internationally recognised NBS BIM Object Standard.



**PLUS**

- Technical review to confirm compliance with Building Regulations, including Document L
- Advice on exposure conditions
- Wind load calculations
- Generation of scheme drawings for tendering purposes
- Framing construction and design solutions
- Window samples for client/authority approval







## Quality Assurance



**BS EN ISO 9001**  
Quality Management systems.



**BS EN ISO 14001**  
Registered Environmental Management System.



KM 33904  
PAS 24 - Windows



KM 57124  
PAS 24 - Doors

**PAS 24 SYSTEM SUPPLIER**  
General and enhanced security performance for windows and doors.



KM 25857  
BS EN 12608

**BS EN 12608**  
PVC-U profiles for the fabrication of windows and doors, classification requirements and test methods.



**SECURED BY DESIGN**  
Secured by design is the UK Police flagship initiative supporting the principles of 'designing out crime' by use of effective crime prevention and security standards.



**CE MARKING**  
Meeting European standards and regulations.

## Contact us

**MANAGING DIRECTOR**  
Roy Frost  
roy.frost@deceuninck.com

**SALES DIRECTOR**  
Rob McGlennon  
rob.mcglennon@deceuninck.com

**COMMERCIAL SALES MANAGER**  
John Duckworth  
john.duckworth@deceuninck.com

**SENIOR FIELD TECHNICIAN**  
Tony Bethell  
tony.bethell@deceuninck.com

**TECHNICAL SUPPORT ENGINEER**  
Mark Castle  
mark.castle@deceuninck.com

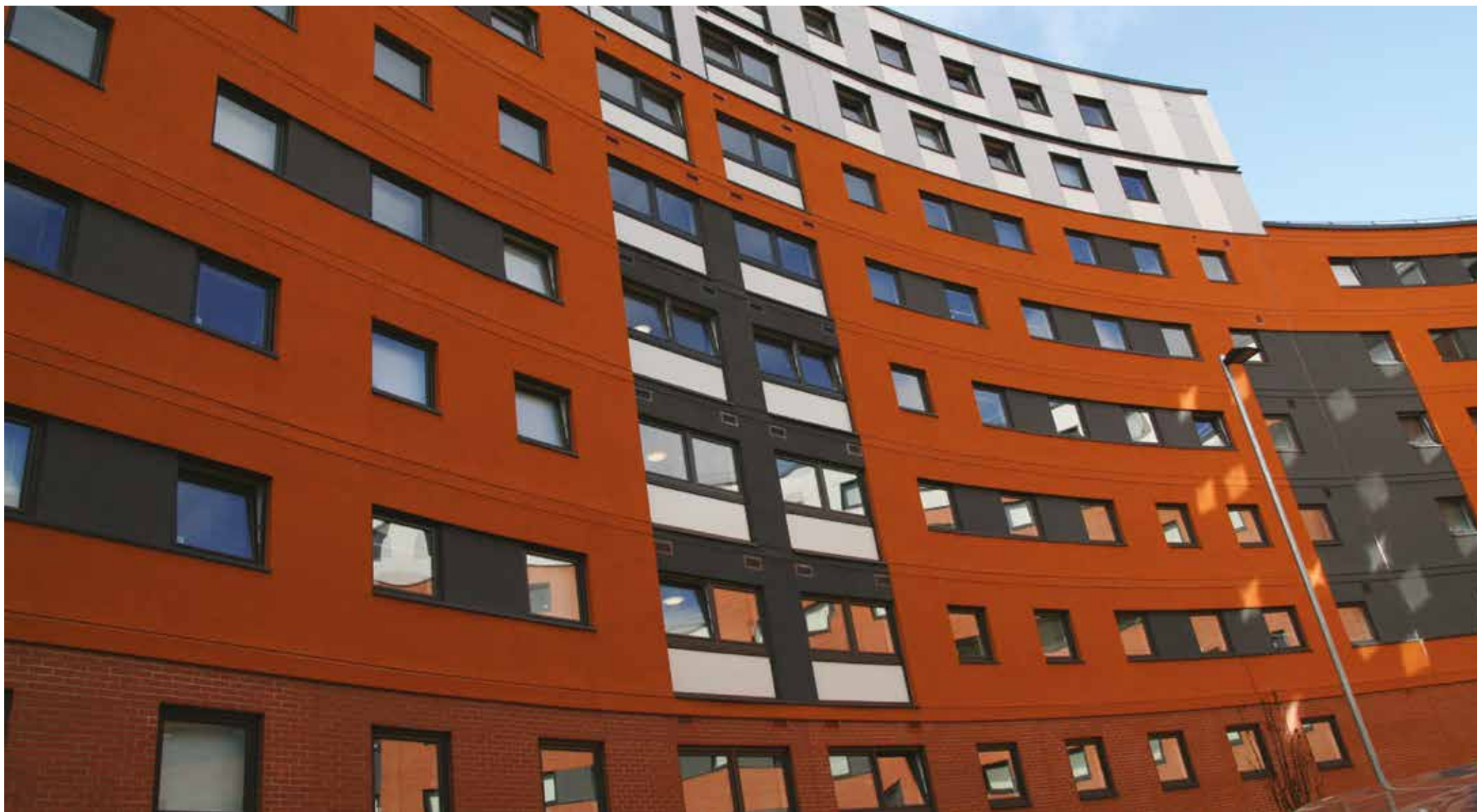
**CUSTOMER SERVICES MANAGER**  
Carol Hearn  
carol.hearn@deceuninck.com



**GENERAL ENQUIRIES**  
Deceuninck Limited  
Stanier Road  
Porte Marsh Industrial Estate  
Calne  
Wiltshire SN11 9PX

Phone: 01249 816 969  
Fax: 01249 815 234  
Email: [deceuninck.ltd@deceuninck.com](mailto:deceuninck.ltd@deceuninck.com)  
Website: [www.deceuninck.co.uk](http://www.deceuninck.co.uk)





Written and designed by MIRA Marketing 2016

**deceuninck**

Deceuninck Limited • Stanier Road • Porte Marsh Industrial Estate • Calne • Wiltshire SN11 9PX  
T 01249 816 969 • F 01249 815 234 • [deceuninck.ltd@deceuninck.com](mailto:deceuninck.ltd@deceuninck.com) • [www.deceuninck.co.uk](http://www.deceuninck.co.uk)

82155-8104